

XAE

PULSAPRO® STROKE LENGTH ACTUATOR

The XAE - a robust Stroke Length Actuator for PULSAPRO® pumps.

Leveraging over 30 years of metering pump Stroke Length Actuator experience, the XAE includes features that satisfy the needs of challenging industrial applications. Its robust design actuates continuously while the pump is under full pressure and operates over a wide temperature range. Factory calibrated, it includes a simple user interface for configuration and operation.



Pumps
PulsaPro



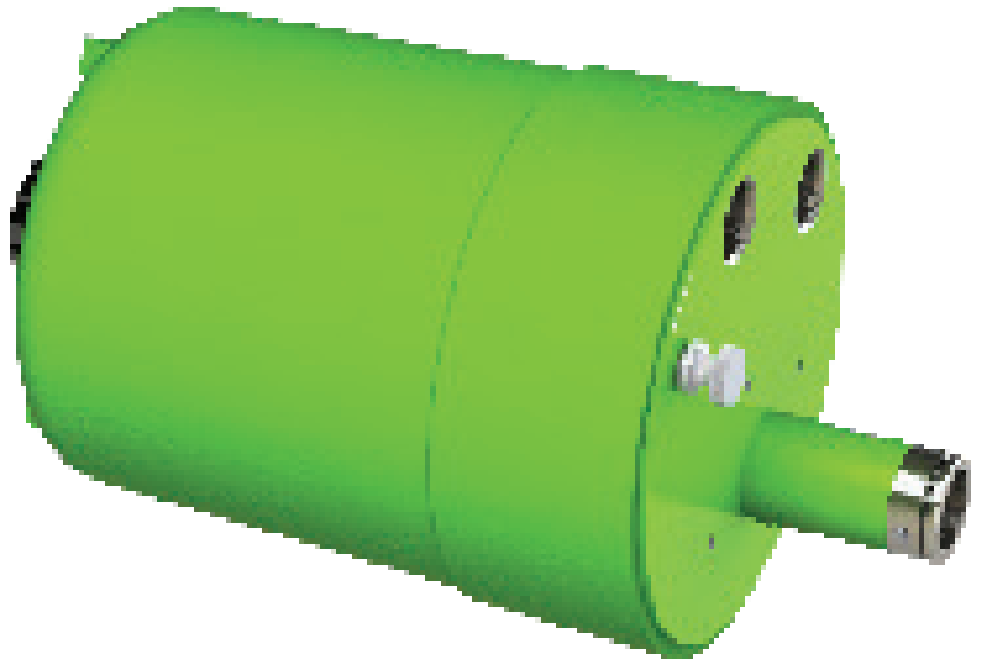
Power
90-265 vac, 50/60 Hz
75 W, single phase



Torque / Speed
20 N-m (177 in-lb)
25 rpm max



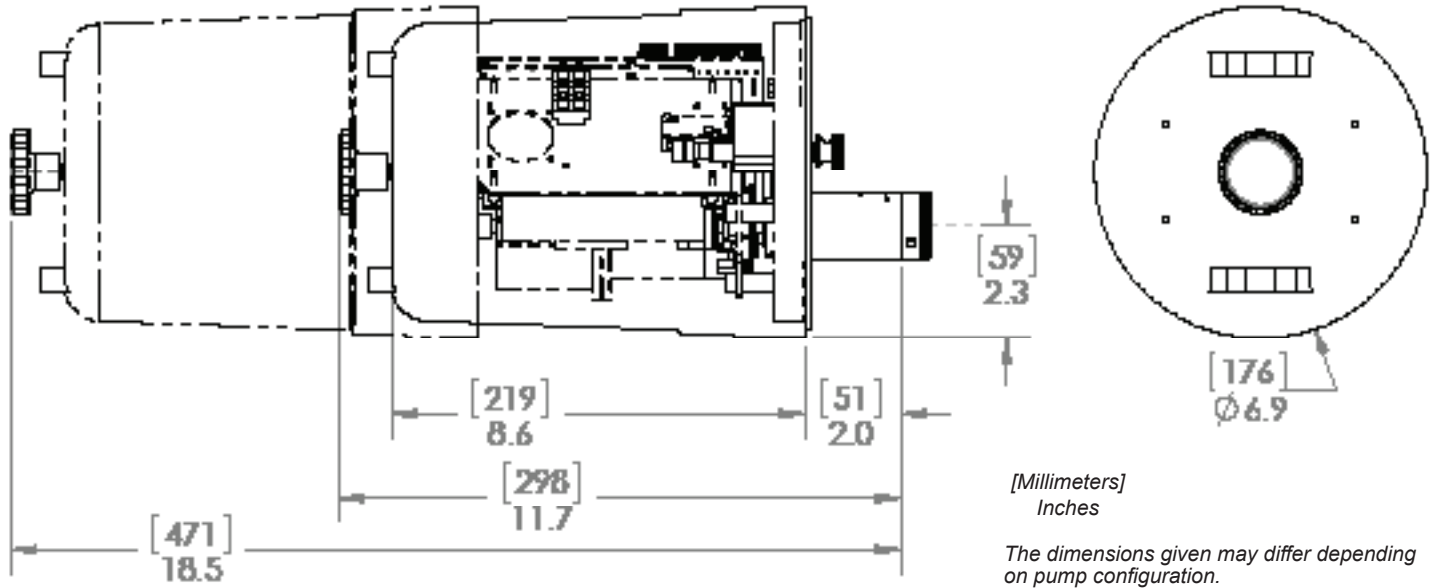
Environment
-40 to 70°C (158°F)
Non-hazardous



FEATURES & BENEFITS

- API compliant design to meet tough industrial specifications
- Brushless DC stepping motor for precise positional control and long life
- Sealed planetary gear box generates high output torque for actuation under pressure
- Continuously tracks manual setting adjustments – even when the power is removed – eliminating zeroing on startup for ready-to-go operation
- Isolated 0-20 mA input and output to assure signal integrity for accurate position control and feedback
- Designed for control panel integration - accommodates industrial grade wire gauges, dry contact inputs, includes 5 A (120 VAC) rated relay outputs
- Simple user interface - manual override
- NEMA Type 4X enclosure

DIMENSIONS



SPECIFICATIONS

Power	Input: Single phase, 90 - 265 VAC, 47-63 Hz (auto ranging), 75 W [10-24 awg]
Mechanical Output	<p>Adjustment Range: 0-100% over 10 to 75 output shaft revolutions (pump model dependent - factory configured)</p> <p>Adjustment Rate: 5 to 25 rpm (auto ranging based on torque load)</p> <p>Adjustment Resolution: 0.064°</p> <p>Analog Input: 0 to 24 mA (4-20 mA factory default), 100 ohms input impedance, isolated [18-22 awg]</p> <p>Analog Output: 0 to 22 mA (4-20 mA factory default), 300 ohms load, isolated [18-22 awg]</p> <p>Digital Input: (3) dry contact (interlock, call-to-run, alarm) [18-22 awg]</p> <p>Digital Output: (3) relay, 5 A @ 120 VAC (run, local/remote, alarm), NO/C/NC connections [12-28 awg]</p>
Environmental	<p>Temperature: -20 to 50°C (-4 to 122°F)</p> <p>Optional Range: -40 to 70°C (-40 to 158°F)</p>
Enclosure (non-hazardous)	NEMA Type 4X
Local Control	Auto/Manual switch