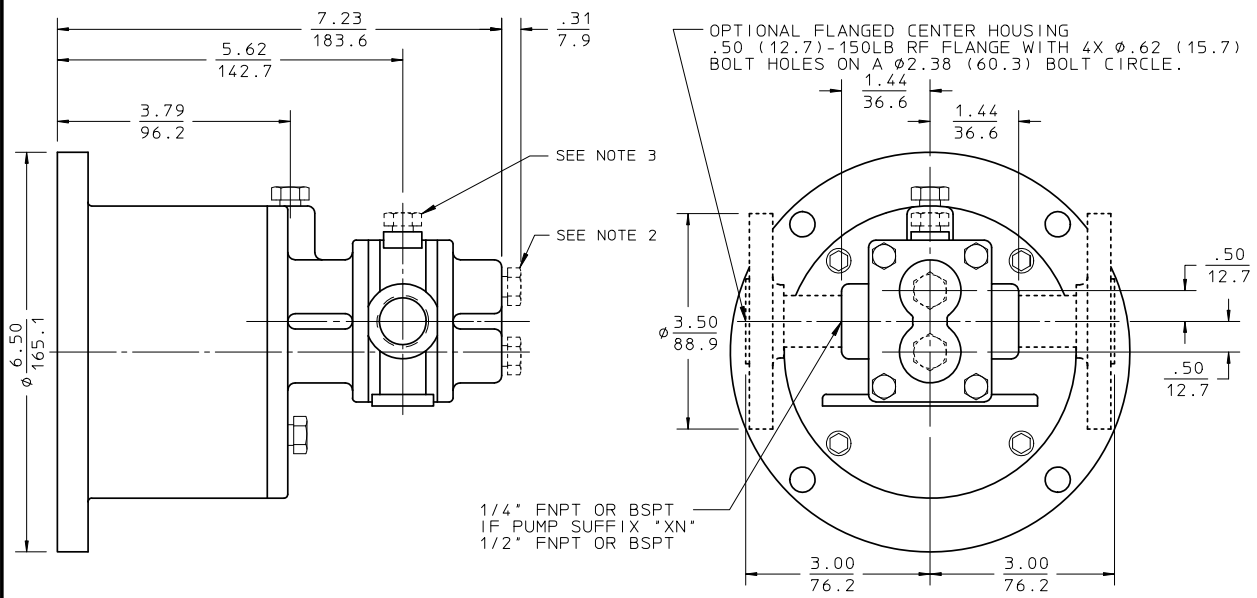


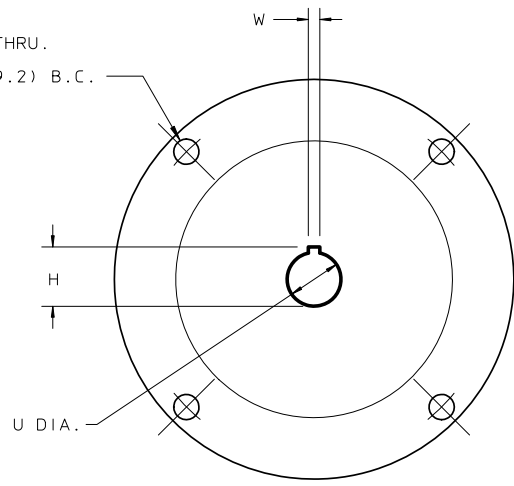
Table of Contents

GMC2 Pump Unmounted for 56C, 143TC, 184C Frame Motor	1
GMC2 Pump Unmounted 71C Frame motor	2
Pump Unmounted for 80C Frame Motor	3
GMC2 Pump Mounted for 56C, 143Tc, 184C Frame motor	4
GMC Mounted Base and Pedestal 56-145T Frame	5
Mounted Base and Pedestal 182-184T Frame Motor	6
GMC2 Pedestal Mounted	7
GMC2/4 Exploded View	8



4X ϕ .41 (10.4) THRU.
 EQUALLY SPACED
 ON A ϕ 5.875 (149.2) B.C.

MOTOR FRAME	U DIA. SHAFT	W KEY WIDTH	H KEY HIGHT
56C	.625 15.9	.188 4.7	.71 18.0
143TC			
145TC	.875 22.2		.96 24.4
182C			
184C			



MOTOR MOUNTING

NOTES:

- SUCTION AND DISCHARGE PORTS DEPENDENT UPON PUMP SHAFT ROTATION.
- BEARING FLUSH AND DRAIN PLUGS (.12 NPT) ARE OPTIONAL.
- VENT PLUG (.12 NPT) OPTIONAL.
- MUST USE FOOT MOUNTED C-FACE MOTOR OF SPECIFIED FRAME SIZE.

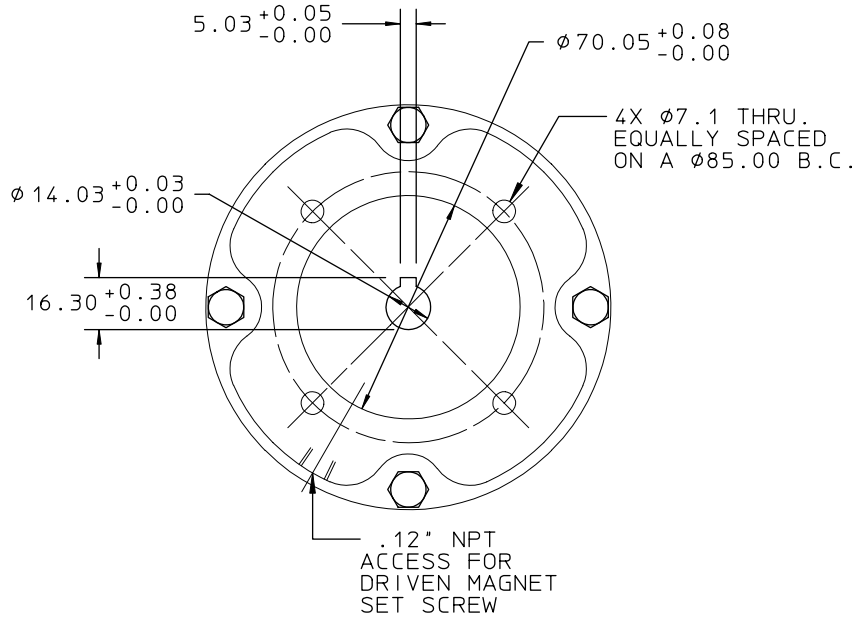
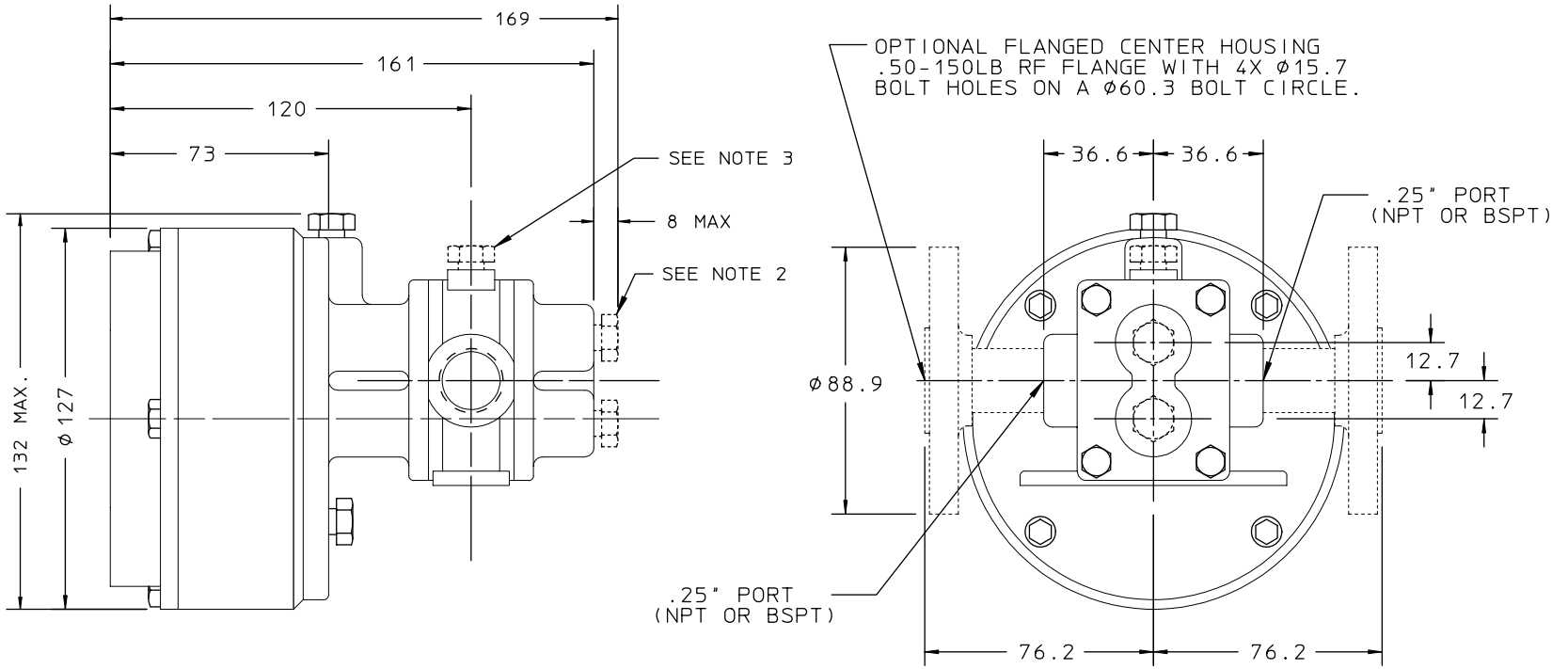
ALL DIMENSIONS ARE INCHES / MM
Isochem **PULSAFEEDER**
 A Unit of IDEX Corporation

MODEL GMC2
 PUMP UNMTD FOR 56C,
 143TC - 184C FR MOTORS

REF	REMOVED GM FROM DESCRIPTION	08/09/13
	REVISION UPDATE	DATE

SECTION/PAGE	MODEL GMC2 / 300
EFFECTIVE	08/09/13
SUPERSEDES	03/27/01

DWN BY: CLA	SD2666
DATE: 10/22/97	



MOTOR MOUNTING

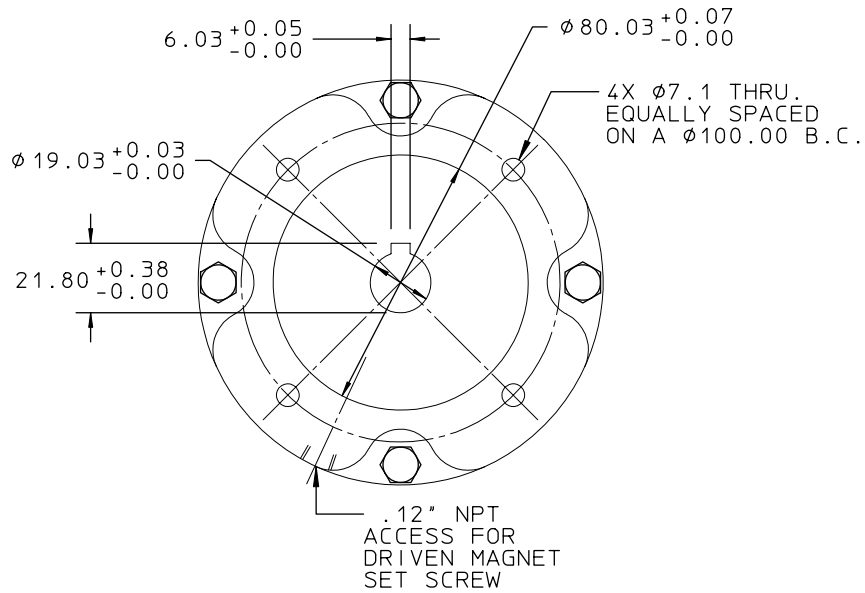
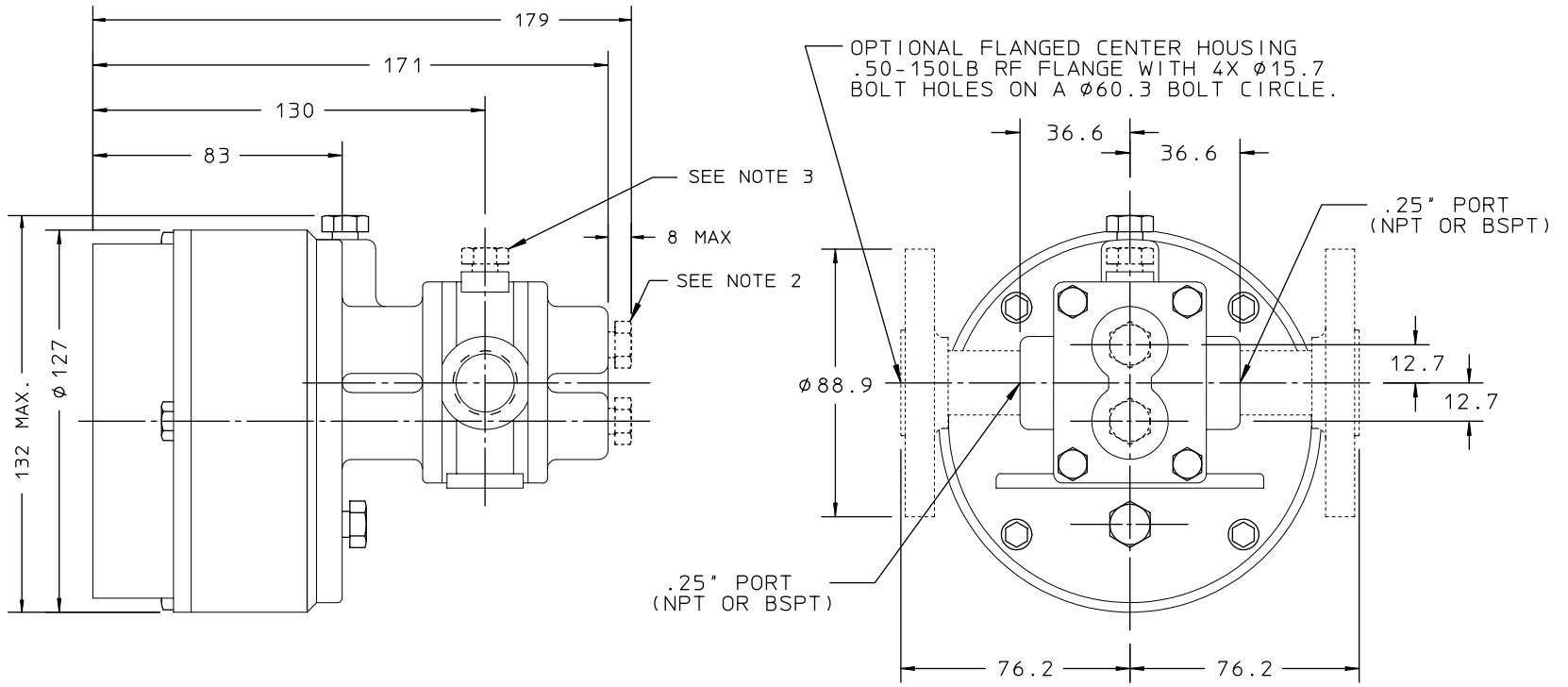
NOTES:

1. SUCTION AND DISCHARGE PORTS DEPENDENT UPON PUMP SHAFT ROTATION.
2. BEARING FLUSH AND DRAIN PLUGS (.12 NPT) ARE OPTIONAL.
3. VENT PLUG (.12 NPT) OPTIONAL.
4. MUST USE FOOT MOUNTED 71 FRAME C-FACE MOTOR.
5. FLANGE SIZE IS IN INCHES.

ALL DIMENSIONS ARE IN MM	
Ischem	PULSAFEEDER A Unit of IDEX Corporation
MODEL GMC2 PUMP UNMTD FOR 71C FRAME MOTOR	
DWN BY: CLA	SD2885
DATE: 09/15/97	

Δ	ADDED OPTIONAL FLANGE	03/27/01
REF	REVISION UPDATE	DATE

SECTION/PAGE	MODEL GM2 / 301
EFFECTIVE	03/27/01
SUPERSEDES	04/01/98



MOTOR MOUNTING

NOTES:

1. SUCTION AND DISCHARGE PORTS DEPENDENT UPON PUMP SHAFT ROTATION.
2. BEARING FLUSH AND DRAIN PLUGS (.12 NPT) ARE OPTIONAL.
3. VENT PLUG (.12 NPT) OPTIONAL.
4. MUST USE FOOT MOUNTED 80 FRAME C-FACE MOTOR.
5. FLANGE SIZE IS IN INCHES.

ALL DIMENSIONS ARE IN MM

Isochem **PULSAFEEDER**
A Unit of IDEX Corporation

MODEL GMC2
PUMP UNMNTD FOR 80C
FRAME MOTOR

DWN BY: CLA

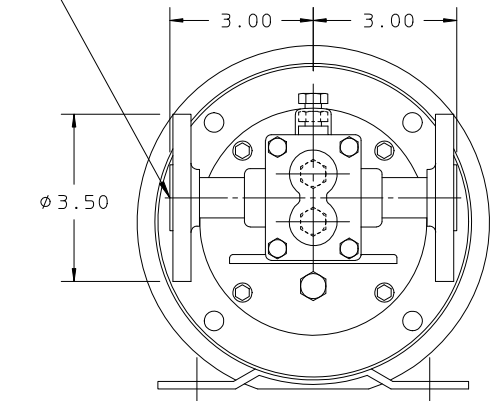
DATE: 09/15/97

SD2886

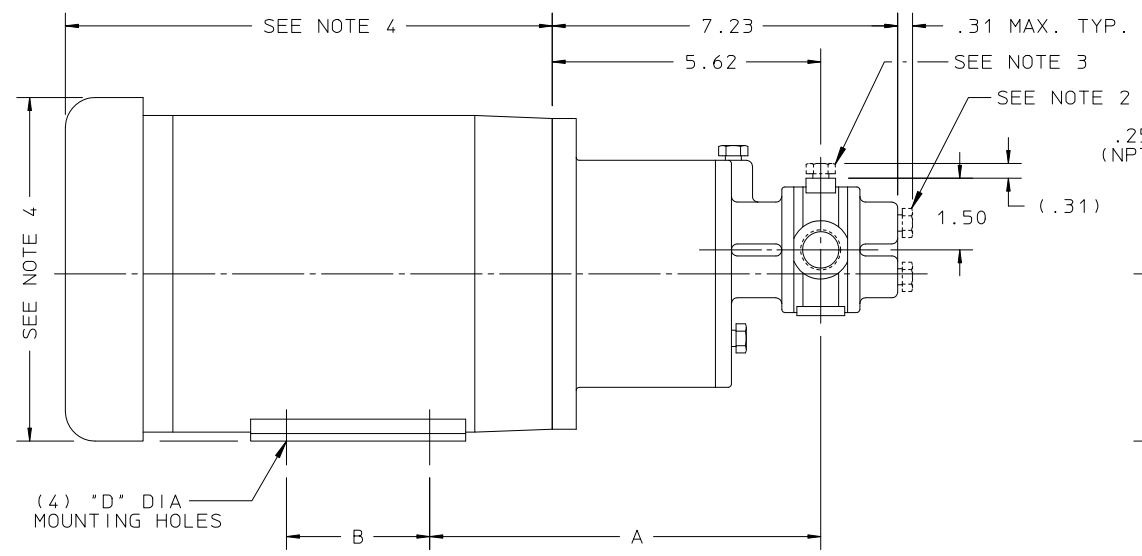
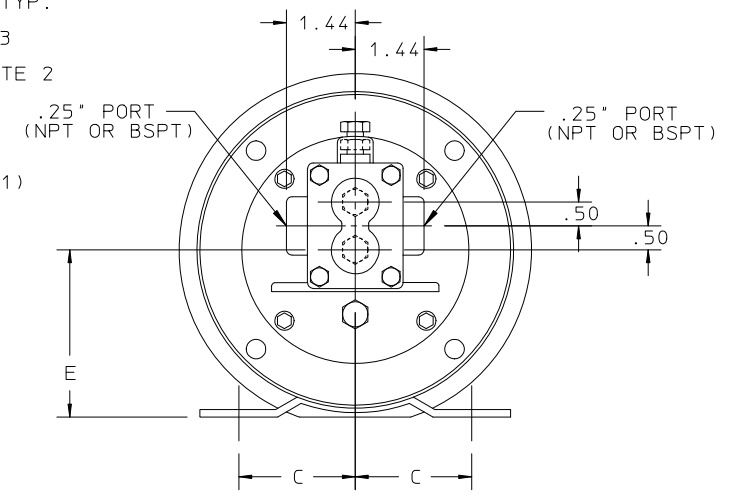
△	ADDED OPTIONAL FLANGE	03/27/01
REF	REVISION UPDATE	DATE

SECTION/PAGE	MODEL GM2 / 302
EFFECTIVE	03/27/01
SUPERSEDES	04/01/98

PORT CONNECTIONS
 50-150LB RF FLANGE WITH 4X ϕ .62
 BOLT HOLES ON A ϕ 2.38 BOLT CIRCLE.



VIEW WITH FLANGED
 CENTER HOUSING



NOTES:

1. SUCTION AND DISCHARGE PORTS DEPENDENT UPON PUMP SHAFT ROTATION.
2. BEARING FLUSH AND DRAIN PLUGS (.12 NPTF) ARE OPTIONAL.
3. VENT PLUG (.12 NPTF) OPTIONAL.
4. MOTOR DIMENSIONS VARY BY MANUFACTURER. CONSULT MANUFACTURER'S DRAWING FOR SPECIFICS.

MOTOR FRAME	A	B	C	D	E
56C	8.25	3.00	2.44	.34	3.50
143TC	8.25	4.00	2.75	.34	3.50
145TC	8.25	5.00	2.75	.34	3.50
182C	8.25	4.50	3.75	.41	4.50
184C	8.25	5.50	3.75	.41	4.50

REF: REMOVED GM FROM DESCRIPTION
 REVISION UPDATE
 DATE: 08/09/13
 SECTION/PAGE: EFFECTIVE: 08/09/13
 SUPersedES: 03/27/01
 MODEL: GMC2 / 303
 MODEL: GMC2
 PUMP MTD FOR 56C,
 143TC - 184C FR MOTORS
 DWN BY: PFW
 DATE: 11/09/94
 SD2669

ALL DIMENSIONS ARE IN INCHES

A Unit of INOX Corporation

REF
REMOVED GM FROM DESCRIPTION
REVISION UPDATE
DATE

SECTION/PAGE
EFFECTIVE
MODEL
SUPERSEDES

ALL DIMENSIONS ARE IN INCHES

Ischem
A Unit of DEX Corporation

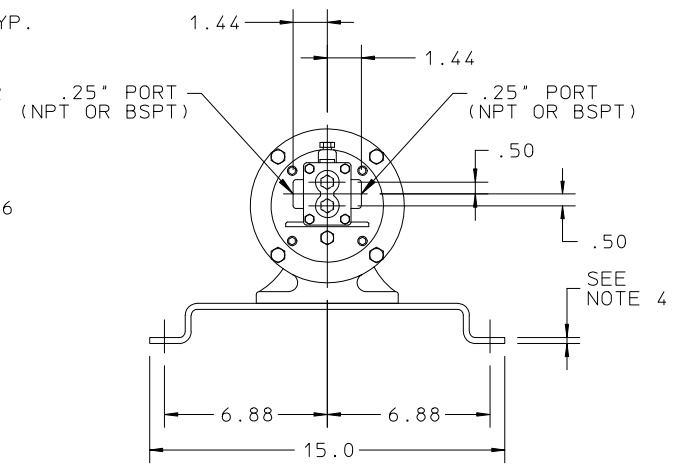
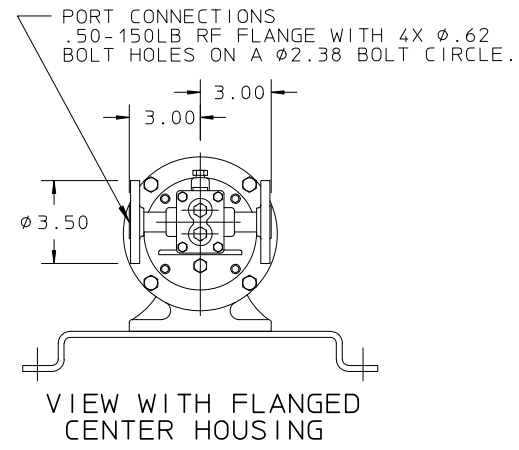
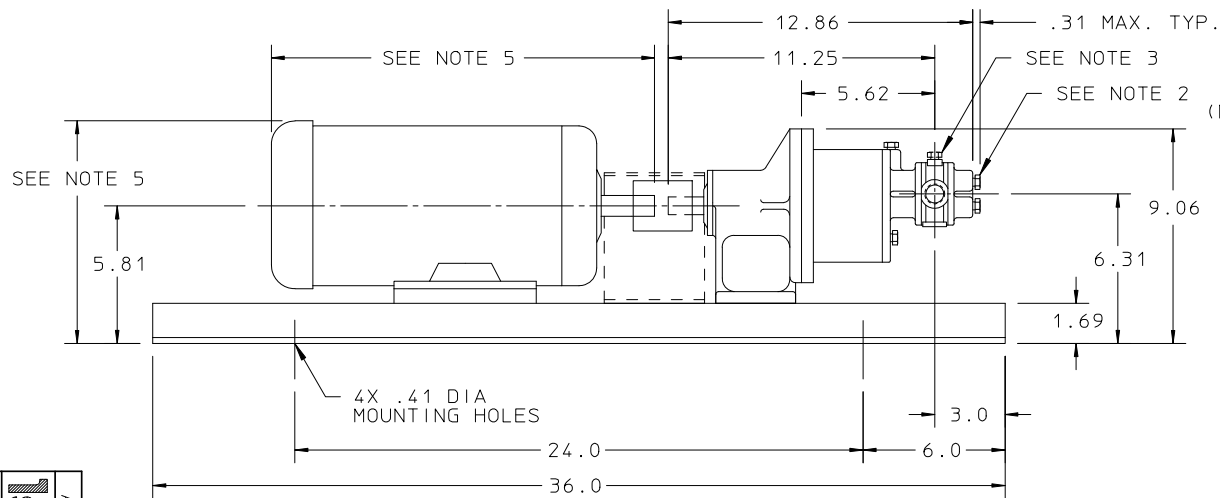
PULSAFEEDER

MODEL GMC2
MTD BASE AND PEDESTAL
56-145T FRAME MOTORS

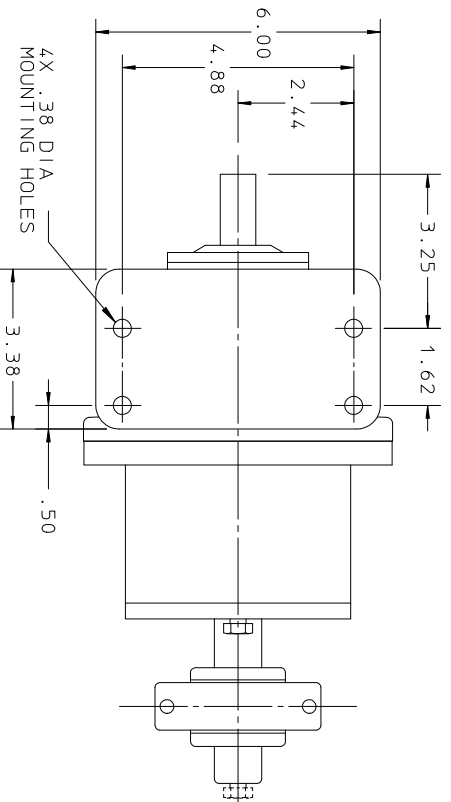
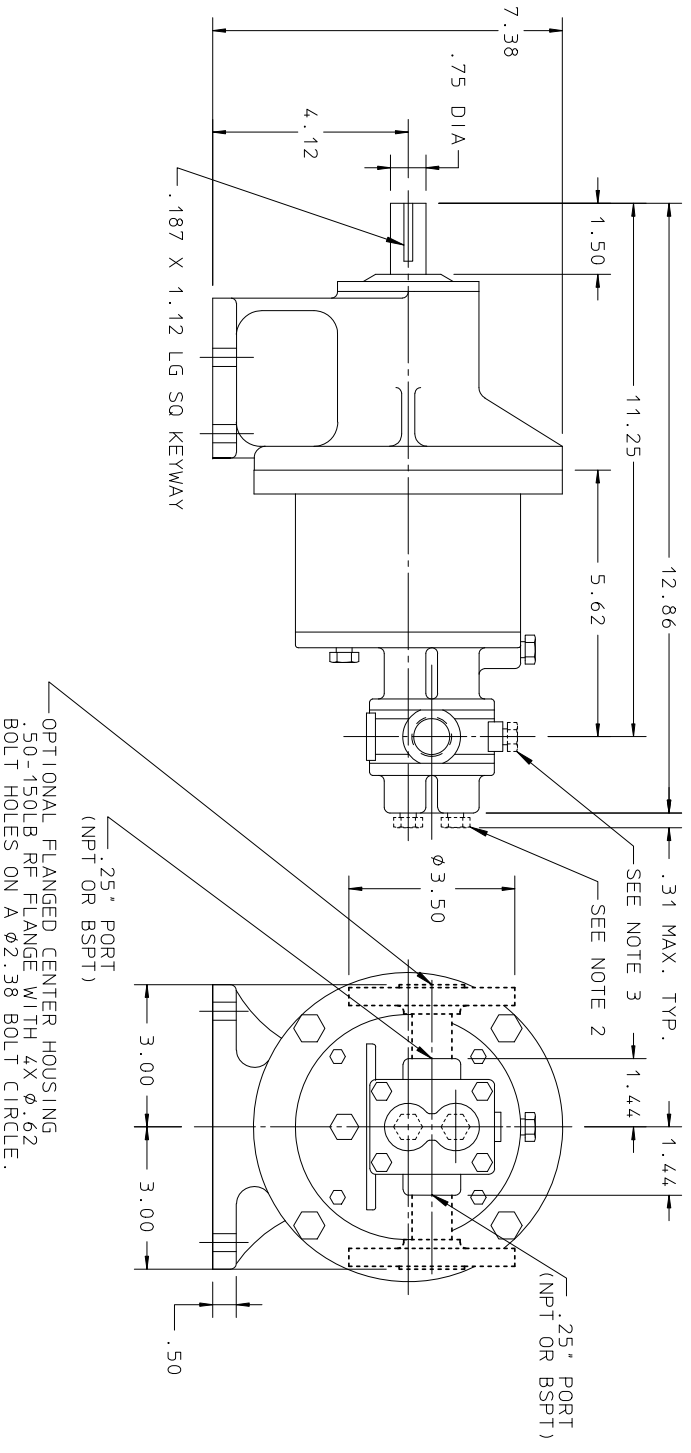
DWN BY: JEM JR
DATE: 10/27/89

SD2675

08/09/13
08/09/13
03/27/01
08/09/13
03/27/01



- NOTES:
1. SUCTION AND DISCHARGE PORTS ARE DEPENDENT UPON PUMP SHAFT ROTATION.
 2. BEARING FLUSH AND DRAIN PLUGS (.12 NPT) ARE OPTIONAL.
 3. VENT PLUG (.12 NPT) OPTIONAL.
 4. MATERIAL THICKNESS:
STEEL .25 THK.
STAINLESS STEEL .19 THK.
 5. MOTOR DIMENSIONS VARY BY MANUFACTURER.
CONSULT MANUFACTURER'S DRAWING FOR SPECIFICS.

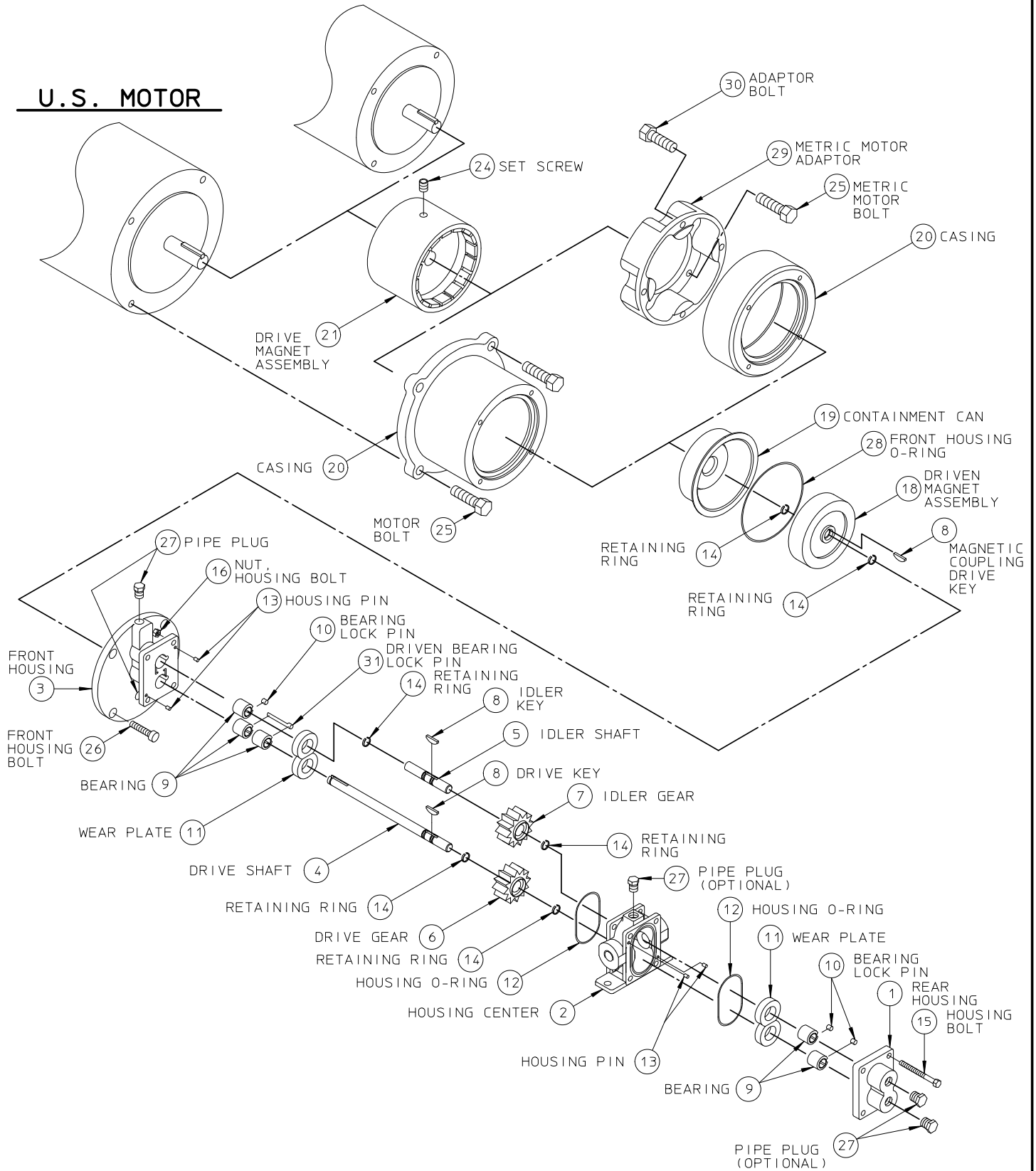


- NOTES:
1. SUCTION AND DISCHARGE PORTS ARE DEPENDENT UPON PUMP SHAFT ROTATION.
 2. BEARING FLUSH AND DRAIN PLUGS (.12 NPT) ARE OPTIONAL.
 3. VENT PLUG (.12 NPT) OPTIONAL.

REF	REMOVED GM FROM DESCRIPTION	08/09/13	SECTION/PAGE	MODEL	EFFECTIVE	DATE
	REVISION UPDATE		SUPPERSEDES	GMC2 / 306	08/09/13	03/27/01
			<p>ALL DIMENSIONS ARE IN INCHES</p> <p>Iscochem PUMP SAFEGUARD A Unit of IDEC Corporation</p> <p>MODEL GMC2 PEDESTAL MOUNTED</p> <p>DWN BY: PEM DATE: 05/11/90</p>			
			<p>SD2689</p>			

METRIC MOTOR

U.S. MOTOR



Isochem **PULSAFEEDER**
A Unit of IDEX Corporation

MODEL GMC2/4
ISOICHEM PUMP
EXPLODED VIEW

REF	REMOVED GM2/4 FROM DESCRIPTION	07/11/13
	REVISION UPDATE	DATE

SECTION/PAGE	MODEL GMC2 / 400
EFFECTIVE	07/11/13
SUPERSEDES	10/06/06

DWN BY: CLA	SD2889
DATE: 09/22/97	