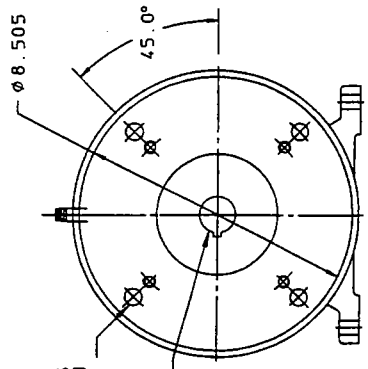


PUMP END VIEW



MOTOR ADAPTOR
 NEMA C-FACE BOLT PATTERN

- NOTE:
- 1.) SUCTION AND DISCHARGE PORTS DEPENDENT ON DIRECTION OF ROTATION.
 - 2.) ALL STANDARD AND OPTIONAL PORT CONNECTION PIPE PLUGS ARE 1/8" NPT.
 - 3.) MOTOR DIMENSIONS VARY BY MANUFACTURER-
 CONSULT MOTOR MANUFACTURERS DRAWING FOR SPECIFICS.
 MOTOR ADAPTOR WILL ACCOMMODATE NEMA C-FACE FRAME SIZES 182/4TC.
 - 4.) (2) 1/8" NPT PIPE CONNECTION PORTS ARE STANDARD WITH DOUBLE CAN OPTION.
 STANDARD ASSEMBLY IS LEFT/TOP CONNECTION PORT ORIENTATION WHEN VIEWED FROM PUMP END.
 CUSTOMER TO SPECIFY WHEN RIGHT/TOP CONNECTION PORT ORIENTATION IS REQUIRED.

ALL DIMENSIONS ARE IN INCHES

Isochem **PULSAFEDER**
 A Unit of GEX Corporation

DIMENSIONAL DRAWING
 GMH6 PUMP UNMOUNTED
 182TC - 184TC FR MOTOR

DWN BY: PFV
 DATE: 04/12/01

SD-2948

SECTION/PAGE	MODEL GMH6/303
EFFECTIVE	04/12/01
REF	REVISION UPDATE
DATE	
SUPERSEDES	NEW