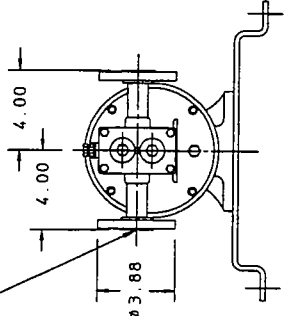
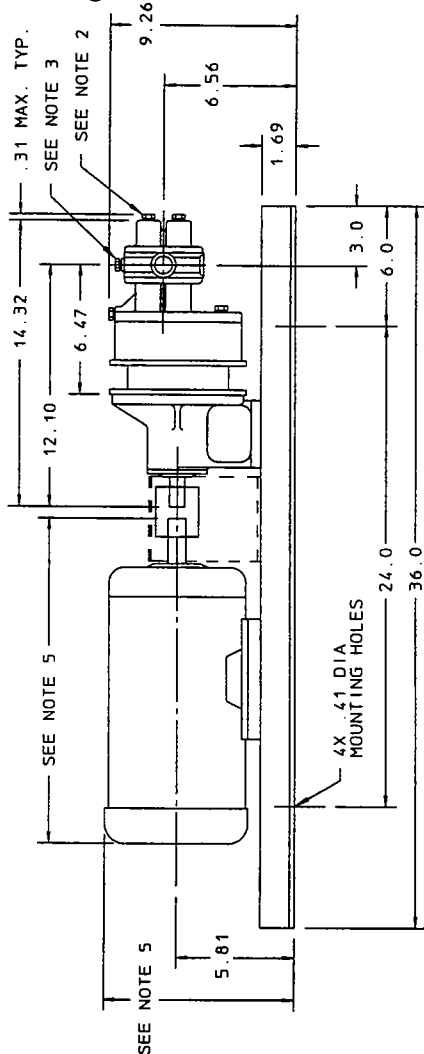
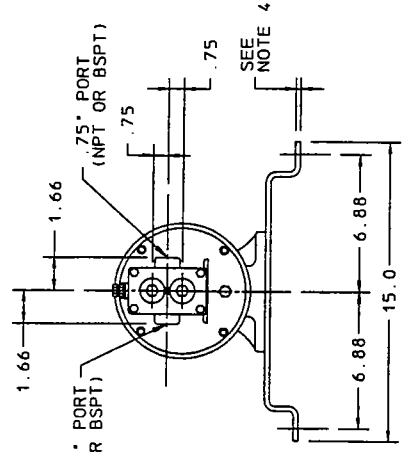


PORT CONNECTIONS
 .75-150LB RF FLANGE WITH 4X ϕ .62
 BOLT HOLES ON A ϕ 2.75 BOLT CIRCLE.



VIEW WITH FLANGED
 CENTER HOUSING



- NOTES:
- SUCTION AND DISCHARGE PORTS ARE DEPENDENT UPON PUMP SHAFT ROTATION.
 - BEARING FLUSH AND DRAIN PLUGS (.12 NPT) ARE OPTIONAL.
 - VENT PLUG (.12 NPT) OPTIONAL.
 - MATERIAL THICKNESS:
 STEEL .25 THK
 STAINLESS STEEL .19 THK.
 - MOTOR DIMENSIONS VARY BY MANUFACTURER. CONSULT MANUFACTURER'S DRAWING FOR SPECIFICS.

REF	ADDED FLANGED VIEW	03/27/01
	REVISION UPDATE	DATE

SECTION/PAGE	MODEL GM6 / 304
EFFECTIVE	03/27/01
SUPERSEDES	04/01/98

ALL DIMENSIONS ARE IN INCHES

Isochem **PULSAFEEDER**
 A Unit of OEX Corporation

MODEL GM6/GMC6
 MTD BASE AND PEDESTAL
 56-145T FRAME MOTORS

DWN BY: JEM JR
 DATE: 10/27/89

SD2679